

CORING PLATFORM

PM5.30



Robust, Modular, and Operational

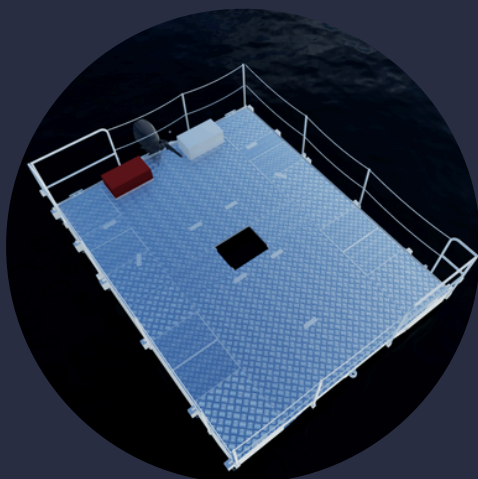
The modular coring platform for scientific research is made entirely of aluminum, making it extremely robust and durable and providing a base suitable for use in remote areas. Designed for the field, this catamaran combines maneuverability, stability, and practicality.

Technical specifications

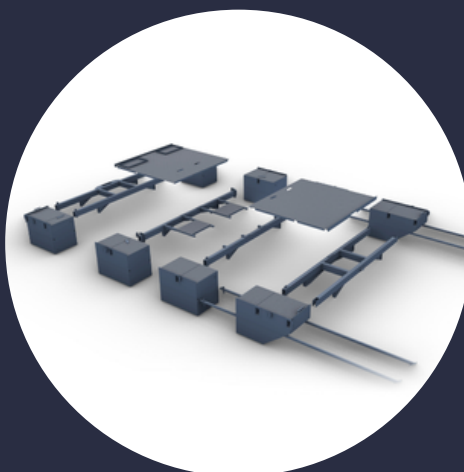
Overall length: 5.3 m / 17 ft
Overall width: 2.5 m / 8 ft
Maximum draft when sailing: 37 cm / 1.2 ft
Engine: Combustion engine

Empty weight: 950 kg / 2094 lb
Usable area: 15 m² / 161 ft²
Load capacity: 1 t / 1.1 ST
Material: Aluminum
French regulation: DIV 222

Moon pool



Screw-free removable structure



Non-slip deck and safety railings



team@armor-x.net

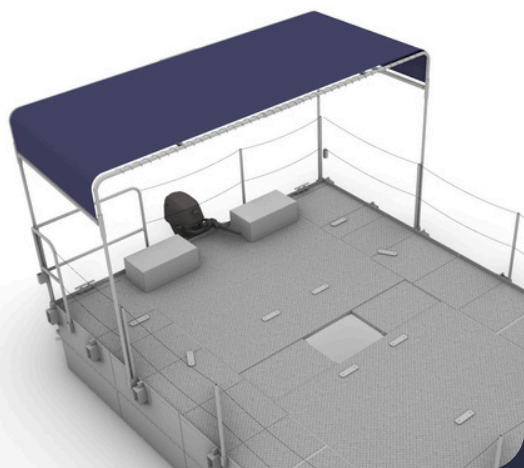
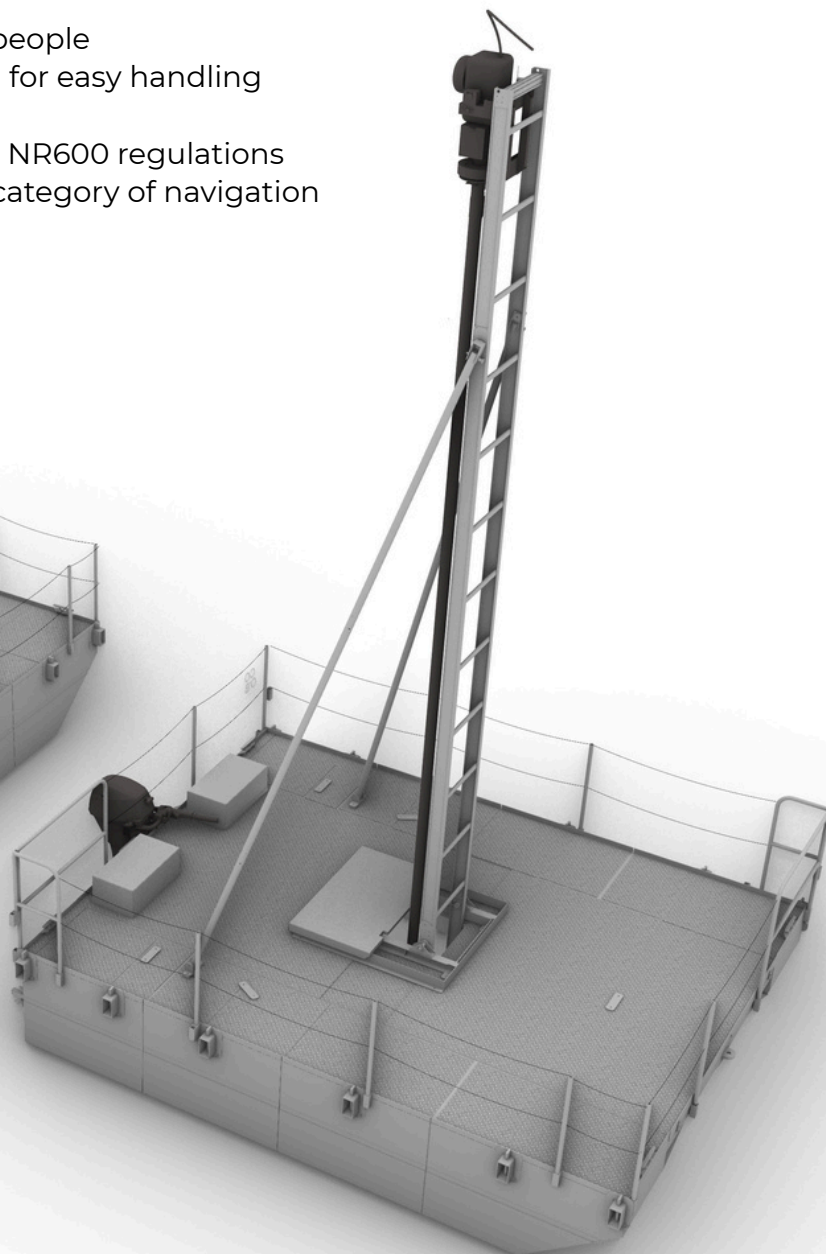


Use

Designed for coring on lakes, rivers, and in the 5th French category of navigation, for remote and inaccessible sites.

Key features

- Assembly in less than 30 minutes by 2 people
- Blocks weighing less than 60 kg (132 lb) for easy handling
- Transportable in a standard trailer
- Structure complies with Bureau Veritas NR600 regulations
- Registered in division 222 - 5th French category of navigation



Optional

Option to add a canopy for protection from the sun and bad weather.



Made in France

Our product is entirely manufactured in Brittany, France. From design to construction, each stage is conceived, designed, and carried out locally.