

# HARBOR WORKBOAT



## P7.30



### Robust, Practical, and Versatile

Developed for demanding port environments, the P7.30 workboat is designed with a reinforced structure and an optimized hull to ensure excellent seakeeping, even at low speeds or under load.

Its uncluttered deck and modular equipment facilitate handling, dock assistance, light towing, and cargo transport operations.

The engine, sized to deliver high torque at low revs, allows for precise and safe maneuvering, while the ergonomic cockpit offers maximum visibility and optimal control in all conditions.

### Technical specifications

Overall length: 7.3 m / 24 ft  
Hull length: 6.4 m / 21 ft  
Overall width: 2.5 m / 8 ft  
Hull width: 2.3 m / 7.5 ft  
Hull draft: 350 mm / 1.1 ft  
Draft with base: 750 mm / 2.5 ft  
Material: Aluminum  
Available deck area: 8 m<sup>2</sup> / 86 ft<sup>2</sup>

Crew: 1 pilot + 5 passengers  
Carrying capacity: 1t / 1.1 ST  
Engine: Yamaha 115 CV (113 hp)  
Fuel capacity: 55L  
French navigation category: 4  
Design category: C  
French safety equipment regulation: Div 222  
Structure certified by Bureau Veritas

# Equipment



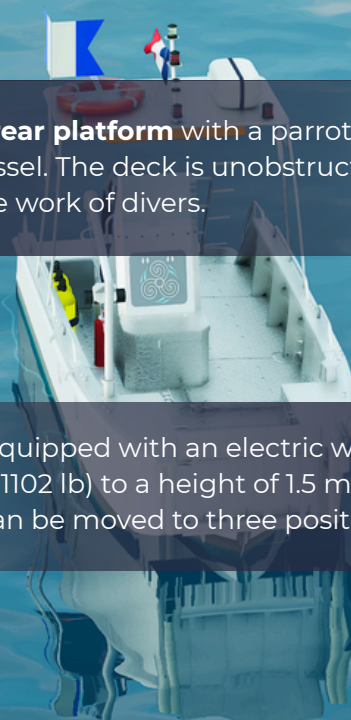
At the front, the boat is equipped with a **tilting bow door** with three positions, adjustable using a manual winch.

- A closed position where the door is watertight and protects the interior of the vessel from waves.
- A horizontal position that allows access and work from the front of the vessel, and which can support up to 150kg.
- A fully open underwater position for towing and lifting operations.

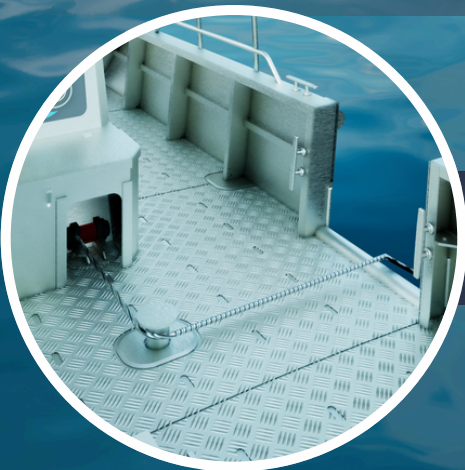
A fully **removable side bulwark** door is located on each side of the vessel to facilitate access and loading of equipment



A **rear platform** with a parrot ladder is located at the rear of the vessel. The deck is unobstructed from bow to stern, facilitating the work of divers.

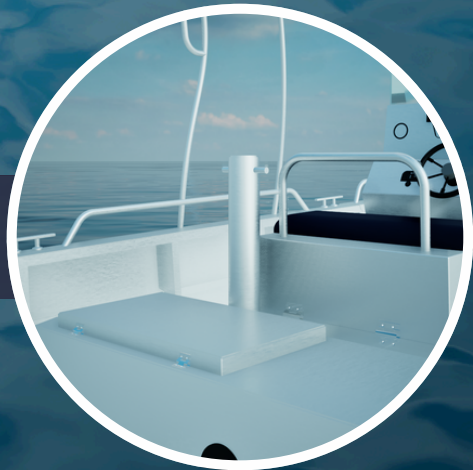


Its **davit** is equipped with an electric winch. It can lift a load of up to 500 kg (1102 lb) to a height of 1.5 m (5 ft) and a distance of 1 m (3.2 ft) and can be moved to three positions.

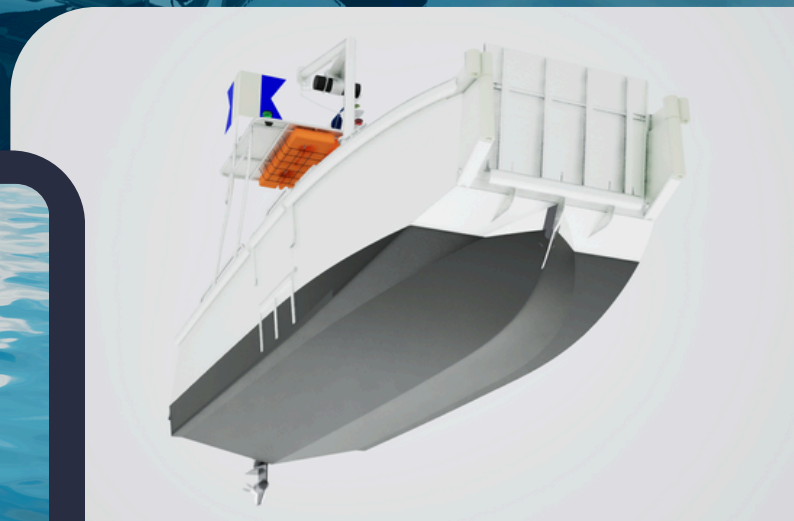
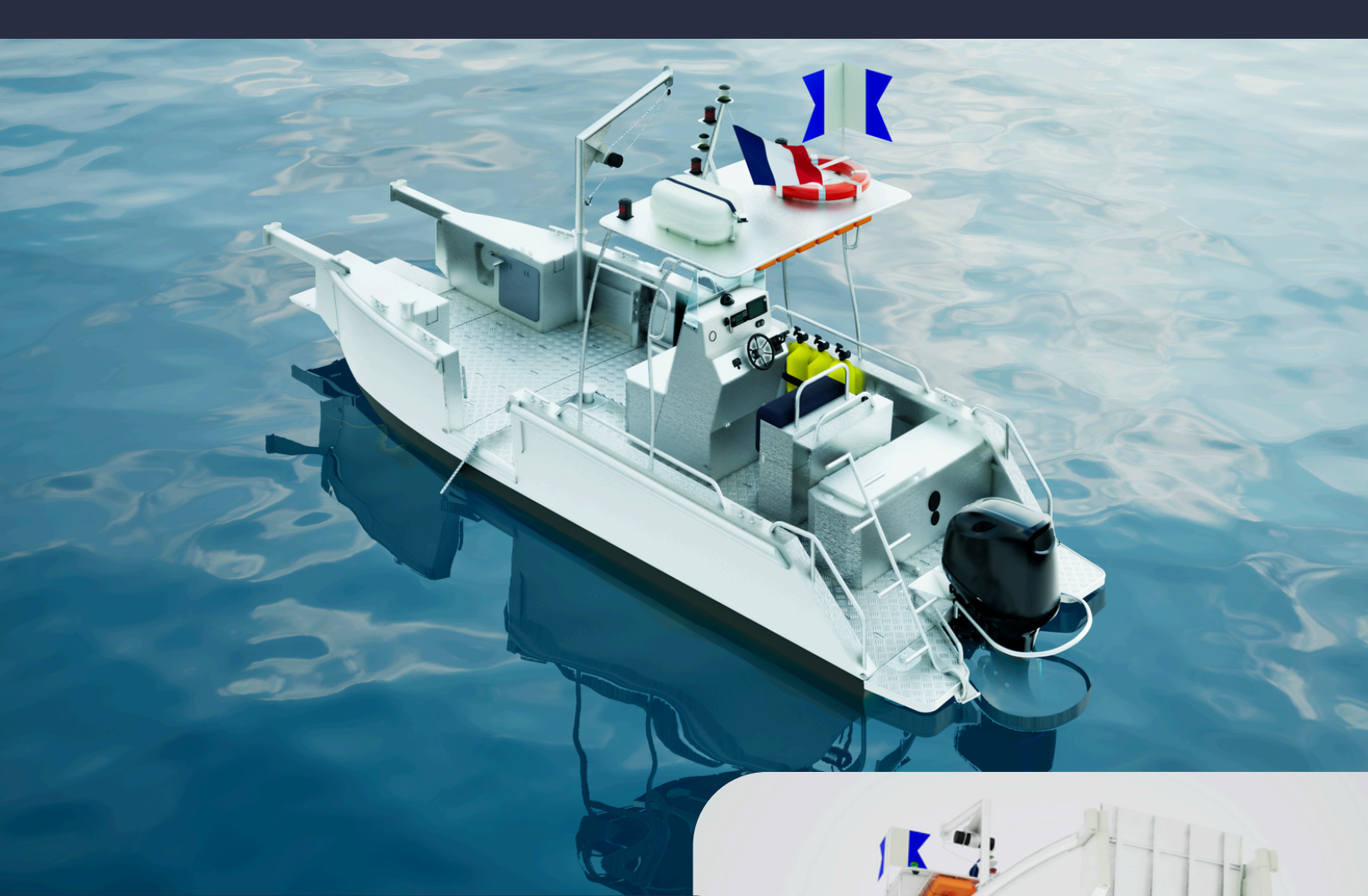


Its **electric winch** can hoist and tow up to 500 kg (1102 lb) of equipment in the water on board.

The vessel is equipped with a **tow mast** at the rear with a 150 kg (331 lb) working load limit for towing pleasure boats.







## Options

Several options can be added to improve the comfort, maintenance, or longevity of the vessel:

- All-electric motorization
- Hybrid motorization with a combustion engine and an auxiliary electric motor
- Gantry at the bow to facilitate the lifting of heavy and bulky items
- Electric winch for the tilting bow door
- Padeyes instead of a towing mast
- Pilot seat

## Uses

- Port maneuvers
- Collecting information about the waterway
- Towing and pushing boats
- Boarding/disembarking passengers
- Lifting and loading equipment
- Approaching port infrastructure
- Beaching on a slipway or shore



# Made in France

Our product is entirely manufactured in Brittany, France. From design to construction, each stage is conceived, designed, and carried out locally.

[team@armor-x.net](mailto:team@armor-x.net)



